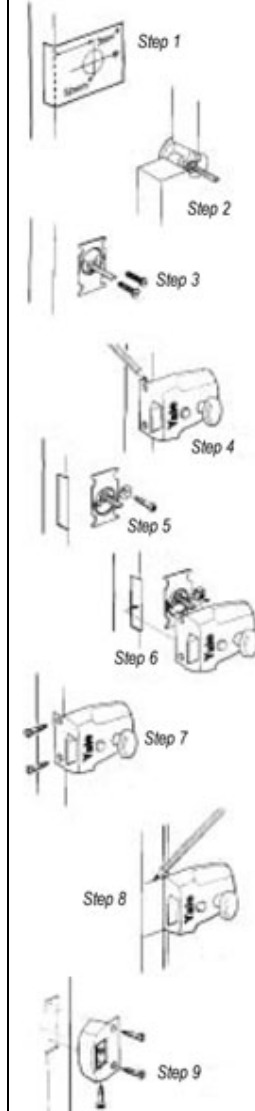


## Yale X7 FITTING INSTRUCTIONS

1. Cut out fitting template below and fold the template as shown.
2. At the height you want your lock using the template mark the spot showing the cylinder hole and the anchor stud hole. At the cylinder hole drill a 32mm diameter through the door. At the anchor stud hole using a 3mm drill bit drill a 20mm pilot hole. (Step 1).
3. With the key removed, Insert the cylinder through the brass ring and place it in the hole at the outside of the door. (Step 2)
4. From the inside of the door, secure the back plate to the cylinder with the two flat-ended connecting screws supplied, so that it fits flush with the door surface. For doors less than 45mm thick, you will need to shorten the connecting screws to make sure they fit tight on the back plate. Hacksaw the camber to 20mm from the cylinder back plate. (Step 3)
- 5 Place the lock body on the inside of the door making sure that the flat connecting bar of the cylinders inserted into the slot on the back of the lock body, Mark the outline of the lip of the lock case on the edge of the door and chisel recess to suite. At the lip using a 2.5mm drill bit drill two 20mm pilot holes (Step 4)
6. Remove the lock from the door and screw the anchor stud (ensuring it is facing the right way) to the door, PLEASE ENSURE THE ANCHOR STUD SCREW IS NOT TIGHTENED TOO MUCH, where the pilot hole has already been created in step 1. (Step 5).
7. Place the lock body on the inside of the door, making sure the connecting bar of the cylinder is inserted into the slot on the back of the lock body, then push the lock onto the anchor stud until it engages. (It may be necessary to tap the lip of the lock to engage the lock to the anchor stud into place) screw the lock onto the door with the screws provided. (Step 6 & 7)
8. Gently close the door and using the fitting lock as a guide, mark the position of the remaining component - the 'staple' on the door frame. Chisel out a recess in the door frame to hold the staple flush with the door frame and fit it with the screws provided, (Steps 8 & 9)



### FITTING TEMPLATE:

Cut out and fold along dotted 'FOLD' line.  
Lock can be fitted to either left or right hand opening doors.

### PLEASE NOTE:

It is essential that all holes are marked and drilled accurately.

