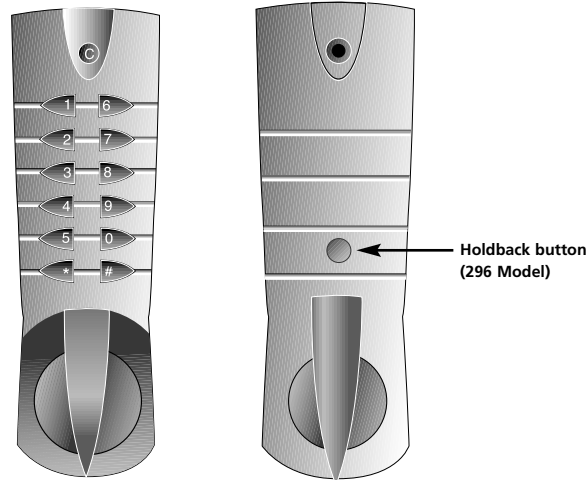


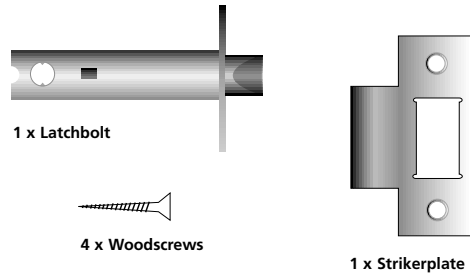
### Section 1

#### Components and Tools Checklist



1 x Outside lock assembly

1 x Inside lock assembly



1 x Latchbolt

4 x Woodscrews

1 x Strikerplate



1 x Spindle



2 x Fixing Screws

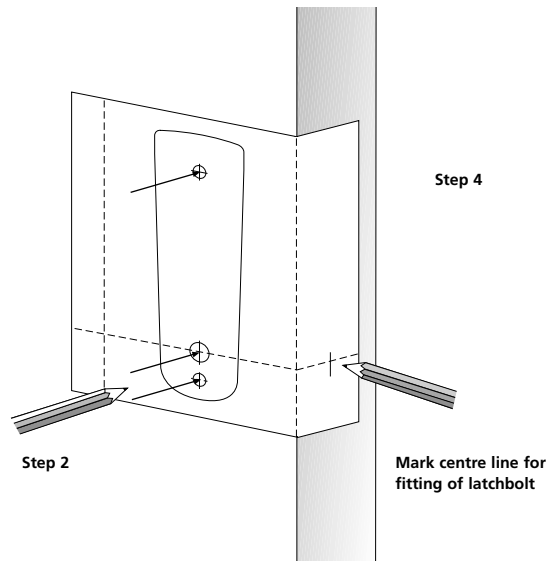
#### Tools required

- |                         |                                |
|-------------------------|--------------------------------|
| Cross head screwdriver  | 25mm drill                     |
| Flat bladed screwdriver | Mallet                         |
| Wood chisel             | Pliers (with cutting facility) |
| 13mm drill              | Pencil                         |
| Ruler / tape measure    |                                |

### Section 2

#### Preparing the door

- Using template A as a guide, decide upon the height of the Codemaster lock.
- Fold the template along the relevant line (depending on which side the door is hung) and mark the positions of the three fixing holes through the template. Then mark the centre line on the door edge, for the fitting of the latchbolt (see diagram).
- Drill the three holes through the door, to the sizes shown on the template. It is important that the holes are drilled square to the drill surface.
- Check that the centre line drawn previously under instruction 2 is at the centre of the drilled spindle hole (redraw if necessary). Along this line mark the centre of the door edge (see diagram).
- At this position drill a 25mm diameter hole to a depth of 85mm, for the fitting of the latchbolt again ensuring the hole is square to the drill surface.
- Using template B, mark out the position of the latchbolt faceplate, and using a wood chisel remove the remaining wood to a depth of 3mm.
- Drill two pilot holes for the location of the woodscrews which will be used to secure the latchbolt.

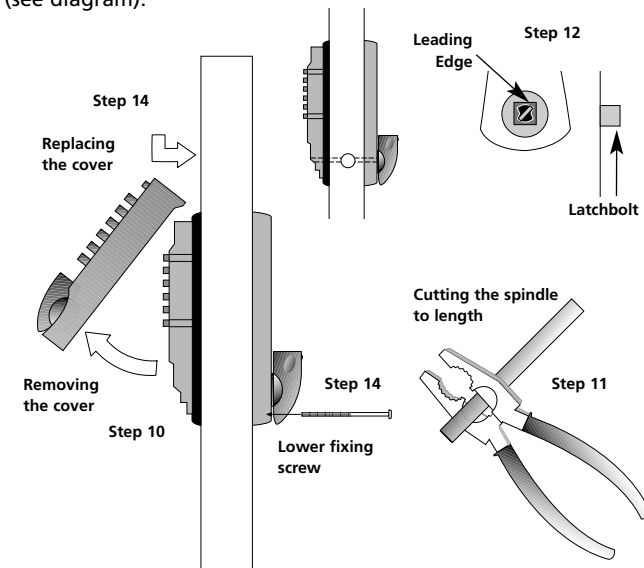


### Section 3

#### Installing the lock

Note: Ensure the door is kept open until the lock is fully installed.

- Fix the latchbolt into the previously prepared position, using the woodscrews. Ensure that the angled face of the latchbolt faces towards the door frame.
- Place the outside lock assembly on the outside face of the door and the inside lock assembly on the inside face of the door. Secure the two parts together through the upper fixing hole using the shorter fixing screw (if applicable).
- Remove the cover from the outside lock assembly, by lifting from the lower end (see diagram).
- Cut the spindle as marked according to the door thickness (see diagram) + 32mm (1 1/4"). Part cut as shown then bend back and forth on cut to break off.
- Place the spindle through the lock assembly, door and latchbolt assembly, ensuring the top edge of the spindle is leaning at an angle towards the latchbolt head (see diagram).
- All products are pre-set with the factory code #34. It is recommended that it is changed to your new code at this point, to a minimum 3-digit code. See setting the code.
- Take the front cover at 45 degrees to the lock. Engage the front cover top hooks inside the lock rim. Then push the body in and hinge down so that it hooks into place. Ensure that the handle is pointing vertically downwards. Turn the inside handle to allow the insertion of remaining fixing screws and tighten (see diagram).



### Section 4

#### Preparing the Frame

- 15 Close the door, and mark the position of the striker plate where the latchbolt touches the doorframe. Using template C, mark the position of the strikerplate.
- 16 Using a wood chisel, remove the wood in the centre of the template to a depth of 15mm.
- 17 Chisel the remaining wood to a depth of 1.5mm for the fitting of the strikerplate.
- 18 Fix the strikerplate to the frame with the remaining woodscrews.

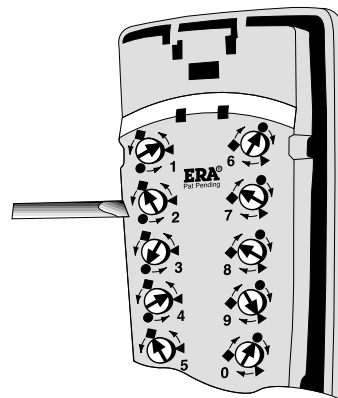
### Section 5

#### Setting the Code

- 19 Prop open the door. The front cover needs to be removed by removing the lower fixing screws from the inside lock assembly and hinging up the front cover from the bottom.
- 20 Remove the front cover from the lock assembly.
- 21 You will now see the twelve code tumblers.
- 22 Using a screwdriver, depress the tumblers and rotate in the direction of the arrows around the tumblers to provide the required code (as directed in instructions 23, 24 and 25).

**Note:** A good fitting flat bladed screwdriver should be used, to avoid damage to the tumblers.  
**Note:** Some tumblers will remain depressed others will pop back out!

- 23 Ensure that the arrowhead on the tumbler lines up with one of the three possible positions, as indicated on the lock body, and clicks into place (see the diagram). Ensure only **one** of these is set to the prime position ● as this is the number that has to be entered first when unlocking.
- 24 Any number of other tumblers can be set to the code key position. A total code length (including the prime) of between three and five characters is recommended for security and ease of remembering.
- 25 All other tumblers should be set to non-code key ▲. For example, the code 3 4 5 6 would require the tumbler No. 3 to be set to the primary code position ●, tumblers 4, 5 and 6 to be set to the code key position ◆ and all other tumblers to be set to the non-code key position ▲.
- 26 Take the front cover at 45 degrees to the lock. Engage the front cover top hooks inside the lock rim. Then push the body in and hinge down so that it hooks into place. Ensure that the handle is pointing vertically downwards. Turn the inside handle to allow the insertion of remaining fixing screws and tighten (see diagram).
- 27 Check the operation of the lock by pressing the C button, then the prime number and then the code numbers and turning the handle, before closing the door.



### Section 6

#### Operating instructions and troubleshooting.

##### To open the lock from the outside

- 28 To open the Codemaster, first press the C button to clear any previously entered codes.
- 29 Press the prime number followed by the other code numbers.
- 30 Turn the handle away from the latchbolt to release the latch. The door is now free to open.
- 31 Release the handle and the lock returns to its locked state.

##### To open the lock from the inside

- 32 Turn the handle away from the latchbolt to release the latch.

##### To hold back the latch (296 model)

- 33 Turn the inside handle fully, away from the latchbolt.
- 34 Whilst holding the handle in this position press the button above the handle until you here a click. Whilst still holding the handle, release the button.
- 35 Release the handle, which will remain in a horizontal position.
- 36 The lock is now inoperative 'on the latch' and will allow access through the door without inputting a code.
- 37 To release the holdback, simply hold the handle and press the button once more. The handle will return to its normal position. The lock will now operate normally by correct input of the code.

#### Troubleshooting

<u>Problem</u>	<u>Possible cause</u>	<u>Remedy</u>
Lock does not operate with correct input of user code.	Code has not been programmed correctly.	Remove front cover from outside lock assembly and reset code using code change instructions.
The door does not close.	The latchbolt may not be inserted correctly. The strike plate is in the wrong place	See installing the lock (section 3). Ensure that the latch and the strike plate are level and the latch springs into the hole in the keep. The keep may need to be moved slightly to allow a good fit.

The operating handle is out of position.	The clutch device has been activated.	The clutch mechanism protects the lock and allows the handle to slip around in the case of abuse or attack. The handle can easily be reset by firmly turning the outside handle (without entering a code!) until it clicks back into place.
--	---------------------------------------	---

Latch does not spring back out fully.	The lock is mis-aligned to the latch.	Loosen fixing screws on inside lock case, reposition then retighten.
---------------------------------------	---------------------------------------	--