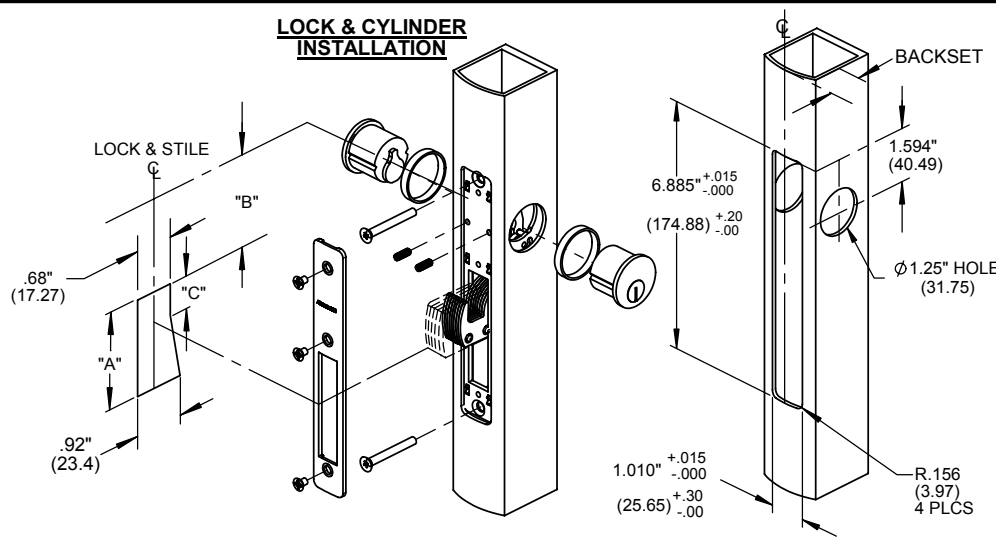
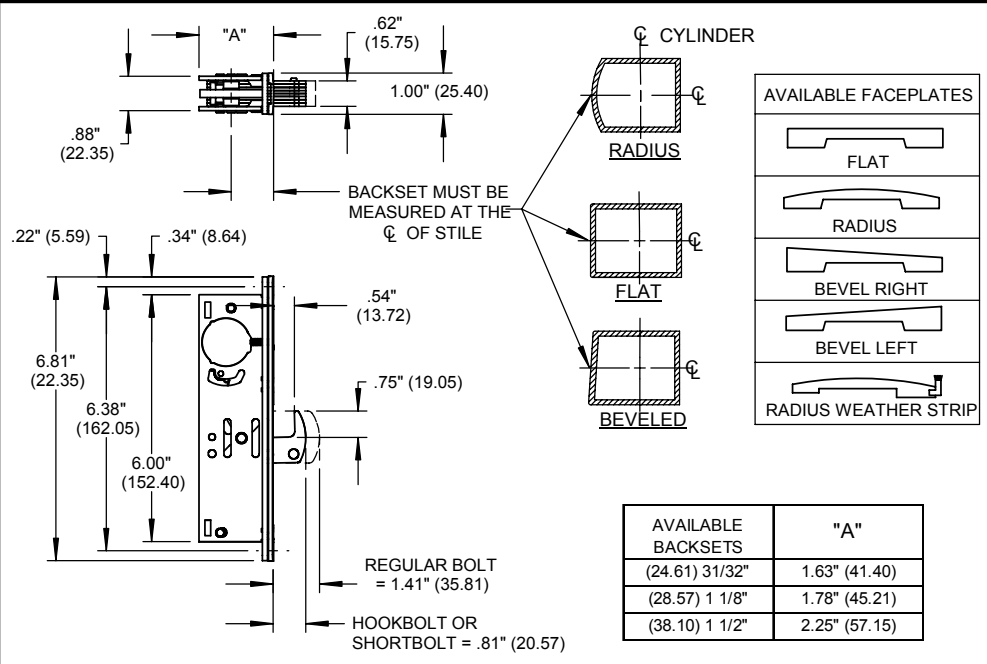


LOCK & CYLINDER INSTALLATION



BOLT TYPE	"A"	"B"	"C"
REGULAR BOLT	3.38" (85.85)	1.38" (35.05)	1.00" (25.40)
SHORT BOLT	2.75" (69.85)	1.38" (35.05)	1.00" (25.40)
HOOK BOLT	1.94" (49.28)	2.19" (55.63)	.25" (6.55)

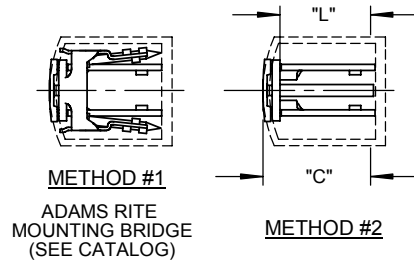
LOCK STILE PREPARATION



AVAILABLE FACEPLATES
FLAT
RADIUS
BEVEL RIGHT
BEVEL LEFT
RADIUS WEATHER STRIP

AVAILABLE BACKSETS	"A"
(24.61) 31/32"	1.63" (41.40)
(28.57) 1 1/8"	1.78" (45.21)
(38.10) 1 1/2"	2.25" (57.15)

ALTERNATE MOUNTING METHODS

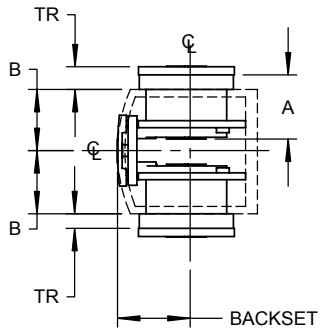


LOCK IS SECURED TO BACK WEB OF STILE BY MEANS OF TWO (2) #10 (M5) FLAT HEAD MACHINE SCREWS & TWO (2) TUBE SPACERS OF PROPER LENGTH TO POSITION LOCK. TO DETERMINE TUBE SPACER LENGTH (L) USE THE FOLLOWING FORMULA:

$$L = C - .25 \quad (6.35)$$

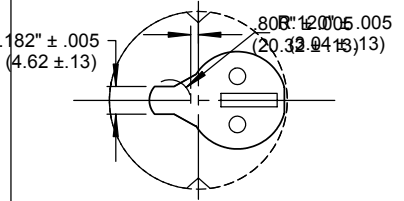
SCREWS WILL BE FURNISHED APPROX. 1/4" LONGER THAN THE SPACER.

CYLINDER TRIM RING



TRIM RING THICKNESS (TR) WILL VARY WITH SPECIFIC CYLINDER MAKE, NUMBER OF PINS & SPECIFIC DOOR THICKNESS. TO DETERMINE TRIM RING THICKNESS, USE THE FOLLOWING FORMULA:

$$TR = A + .125 - B \quad (3.17)$$



THE MS SERIES LOCKS ARE OPERABLE BY ANY STANDARD 1 5/32" DIAMETER (29.37) MORTISE CYLINDER WITH SPECIAL MS CAM DIMENSIONED AS ABOVE. CYLINDERS WITH MS CAMS CAN BE READILY OBTAINED FROM MOST CYLINDER MANUFACTURERS.